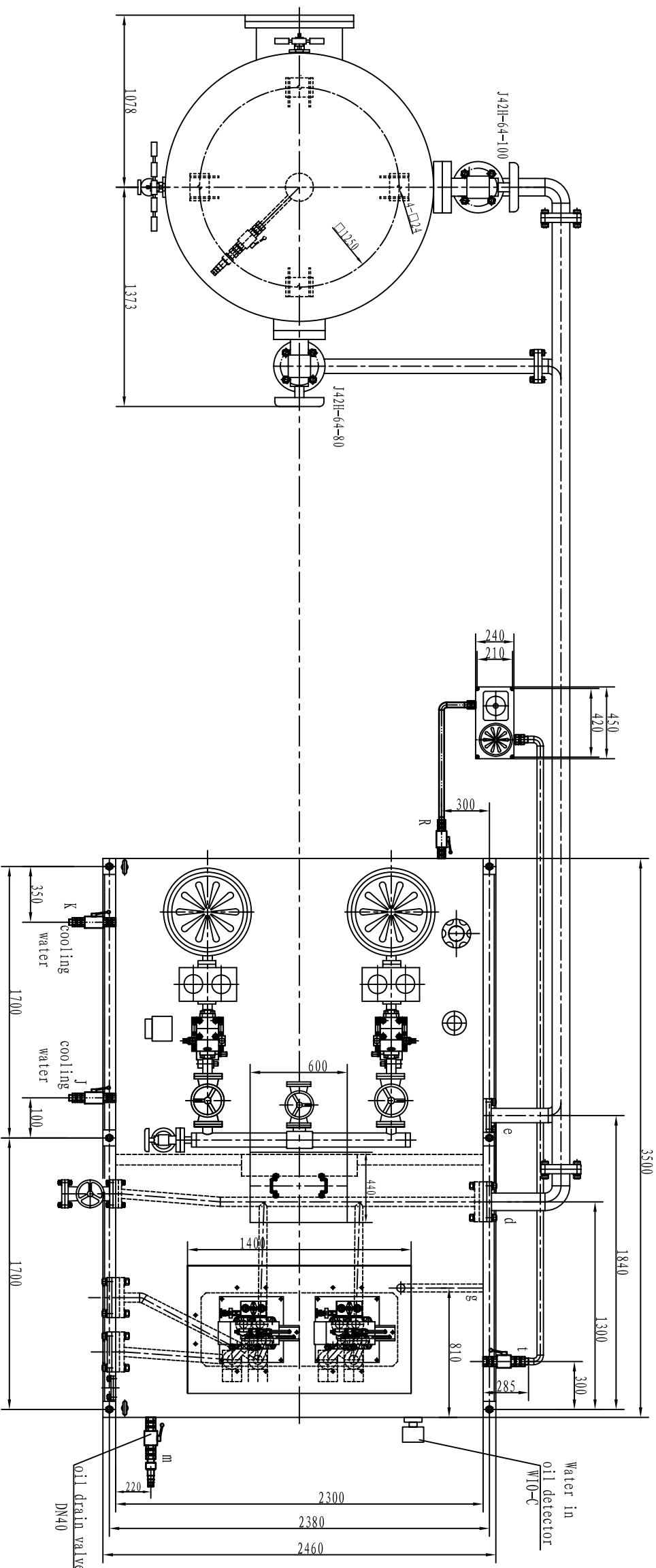


basic technical data		
1	pressure vessel volume	8000 L
2	pressure vessel normal oil volume	2670 L
3	sump tank normal oil volume	8000 L
4	sump tank largest oil volume	10800 L
5	screw pump type	3680XC6
	rated pressure	6.3 MPa
6	volume of oil	480 L/min
	motor type	Y280M-4B5
	rotational speed	75 kW 1450 r/min

Flanges	Size	External connection line	Application
a	DN100	φ 108X5	guide vane servomotor open
b	DN100	φ 108X5	guide vane servomotor close
a1	DN100	φ 108X5	blade vane servomotor open
b1	DN100	φ 108X5	blade servomotor close
c	DN50	φ 59X5	slip oil
d	DN100	φ 108X5	pressure oil
e	DN80	φ 89X5	pressure oil
f	DN12	φ 18X2.5	air replenishment hole
g	DN60	φ 68X4	cable hole
h	DN32	φ 38X3	slip oil
j	DN25	φ 33X3	cooling water interface
K	DN25	φ 33X3	cooling water interface
m	DN40	DN40 hose	oil drain interface
q	DN40	DN40 hose	drainage interface
R	DN25	φ 33X3	filtering hand carts
t	DN32	φ 38X3	filtering hand carts
n	DN50	φ 59X5	pressure oil



BUON DON HYDROPOWER JOINT STOCK COMPANY				
SREPOK 4A HYDRO POWER PROJECT - LOT NO.11				
CONTRACTOR	CONSORTIUM OF HYDROCHINA ZHONGNAN ENGINEERING CORPORATION & TIANJIN ALSTOM HYDRO CO.,LTD			
DRAWING NO. OF CONTRACTOR	WSH/CS-P4A-05060-103	REV	B	
DESIGNER	WUHAN SANLIAN HYDROPOWER CONTROL EQUIPMENT Co., LTD			
TITLE				
Governor oil pressure unit layout				
DESIGNED	REVIEWED	SHEET		1/1
CHECKED	VERIFIED	TOTAL		1
EXAMINED	SCALE	DATE	2011.05.1	